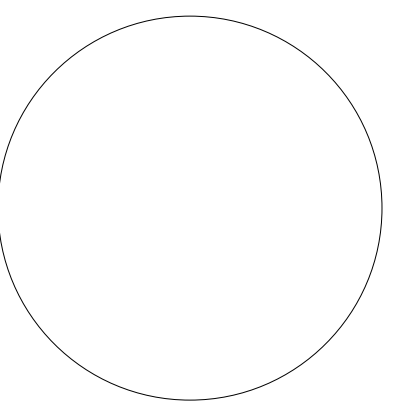
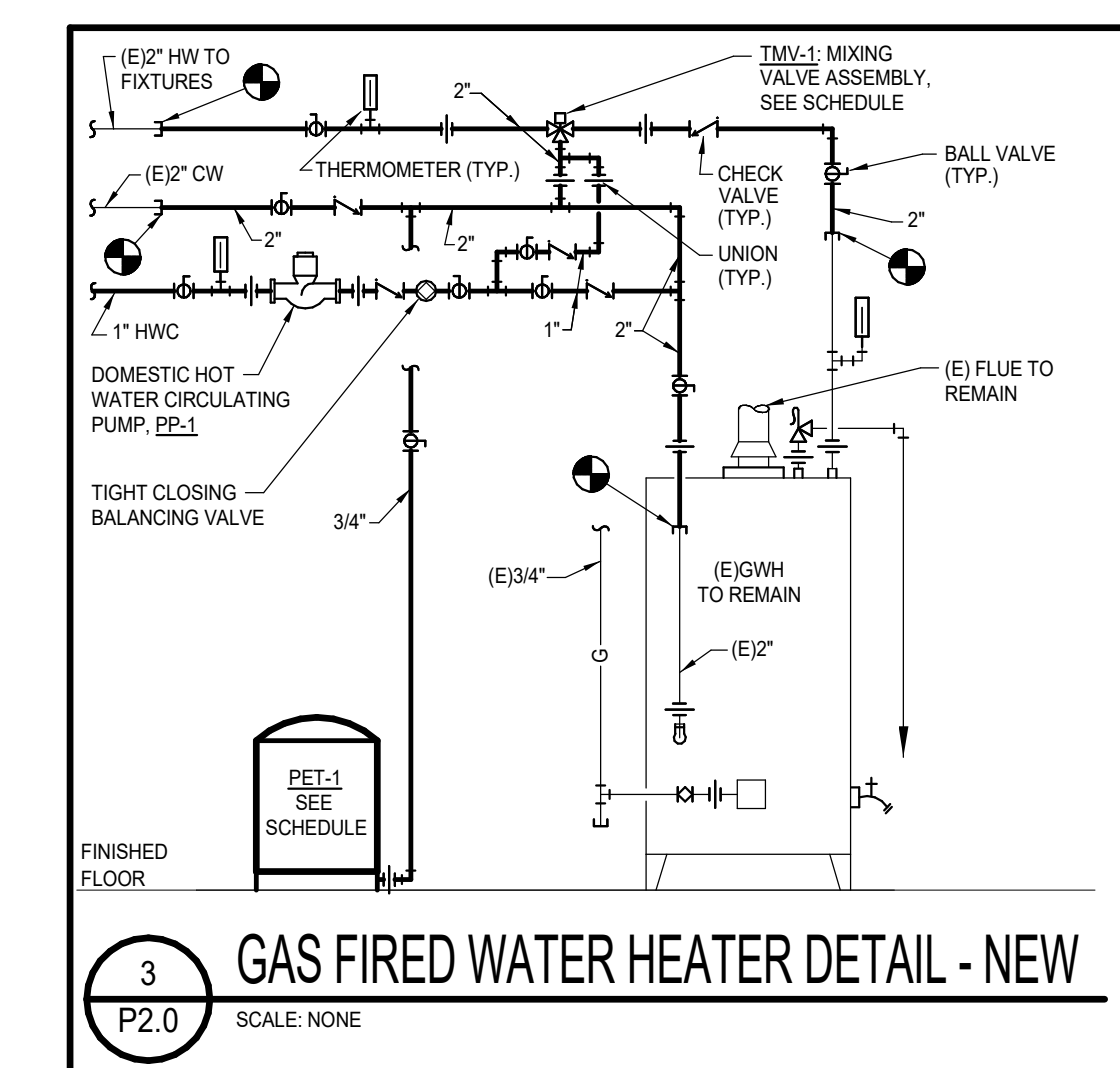
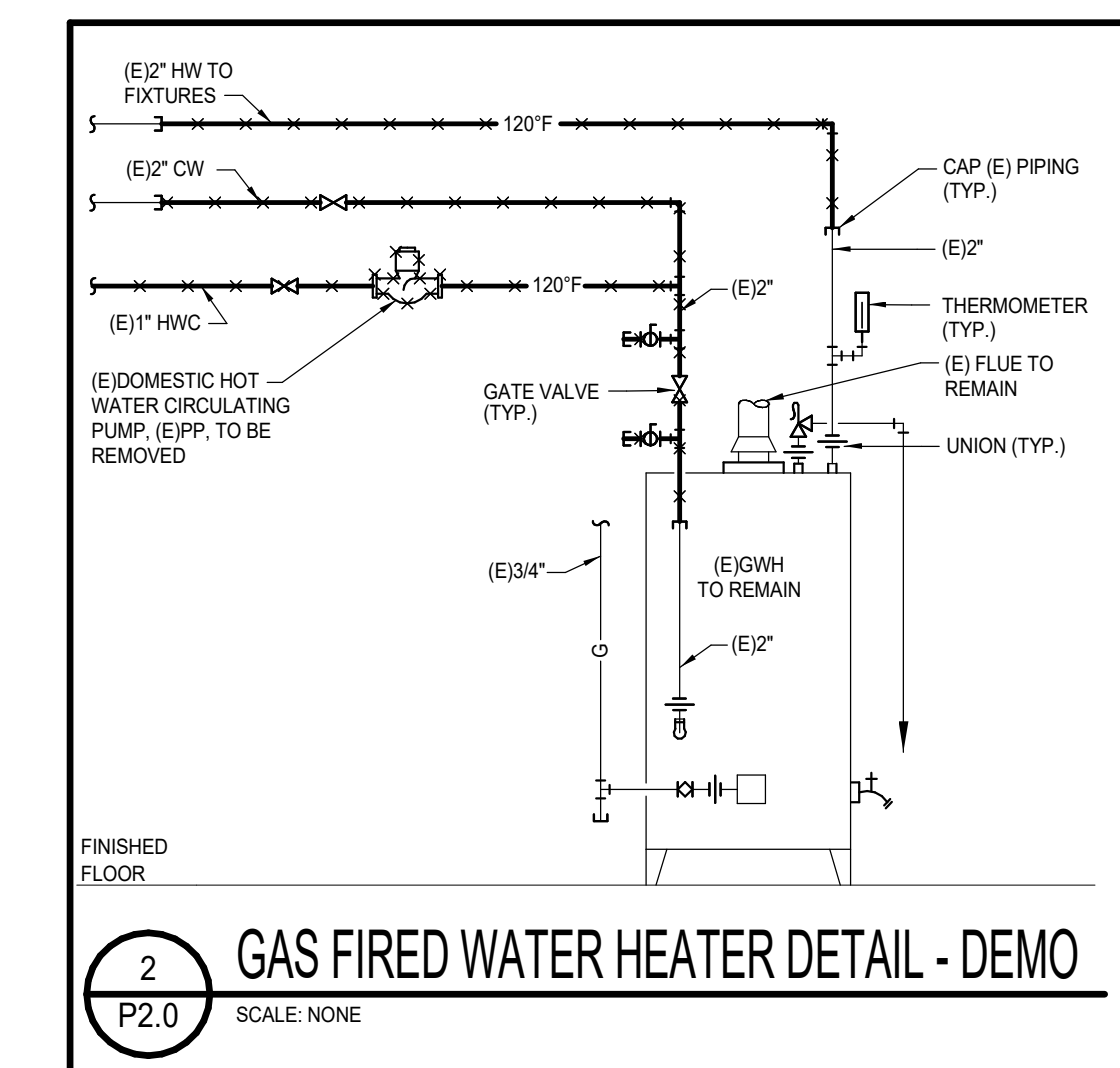
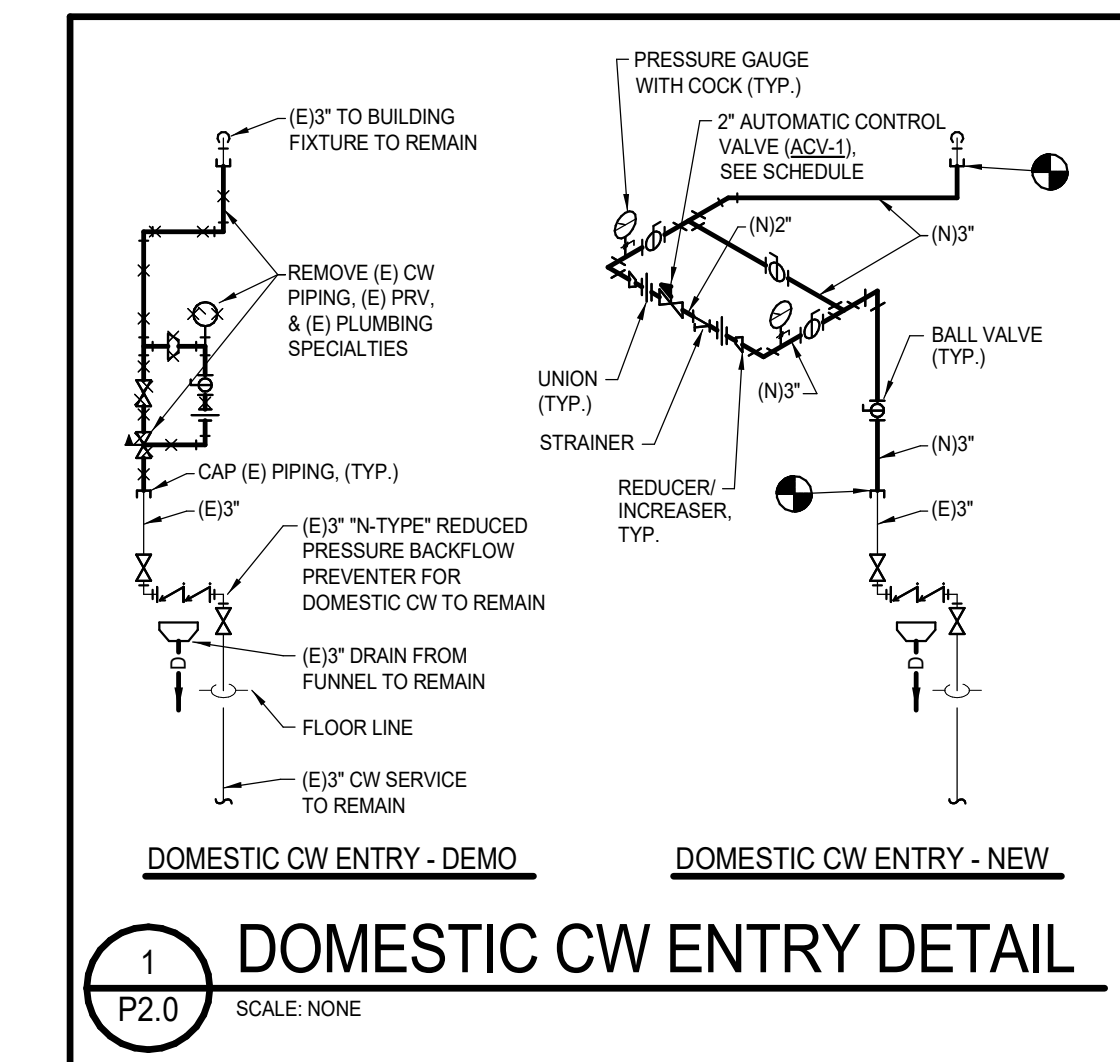


PLUMBING PUMP SCHEDULE

PLAN CODE	MANUFACTURER & MODEL NO.	TYPE	SERVICE	IMP. DIA. (IN)	GPM	HEAD	% EFF.	ELECTRICAL				VIBRATION ISOLATION	CONTROL	WEIGHT (LBS)	REMARKS
								HP (BHP)	VOLTS	PH	RPM				
PP-1	B&G PL-36B	IN-LINE	BUILDING	-	4.5	22	-	1/6	115	1	3,300	INTEGRAL	ON/OFF SWITCH	13.1 LBS	NOTE: 1
1. CONTINUOUS OPERATION.															

MISCELLANEOUS PLUMBING FIXTURE SCHEDULE

PLAN CODE	DESCRIPTION	MANUFACTURER	MODEL	FINISH	REMARKS
PET-1	PLUMBING EXPANSION TANK	AMTROL	ST-12	STEEL	-
TMV-1	THERMOSTATIC MIXING VALVE	POWERS	LFLM92	ROUGH BRASS	NOTES: 1,2
ACV-1	AUTOMATIC CONTROL VALVE	WATTS	2" LFM115-74GD-X-Y-FOA-ACS-50SSPI	DUCTILE IRON	NOTES: 3,4,5,6
NOTES: 1. SET DISCHARGE TEMPERATURE TO 120°F. 2. 11 GPM AT 10 PSI LOSS. 3. 110 GPM, 105 PSI INLET TO 75 PSI OUTLET. 4. PROVIDE WITH 150# FLANGES. 5. PROVIDE WITH PILOT VALVE (WATTS LFCPI15) AT 75 PSI OUTLET. 6. PROVIDE WITH 1/2" LOW FLOW BY-PASS WITH 1/2" BY-PASS PRV (WATTS LFZZ3) AT 80 PSI OUTLET. 7. SET BY-PASS PRV 5 PSI HIGHER THAN MAIN ACV AND PILOT.					



The Ballard Group, Inc.
Mechanical Consulting Engineers
2525 S. Wadsworth Blvd., Suite 200
Lakewood, CO 80227
4750 S. College Ave., Suite 203
Fort Collins, CO 80525
(970) 568-8762

City Of Wheat Ridge - Municipal Court & Police Station
7500 W 29th Ave
Wheat Ridge, CO 80033

Issue Record

Job No. 17057

Date Issue Date

Drawn TRH

Checked TRH

Contents
PLUMBING SCHEDULES & DETAILS

P2.0