

Catalog Number:

CP3A51C16AAPCSXCCOD3

120/240 VAC, 1-phase, 3-wire; 100 Amps Maximum, (see Main circuit breaker rating)

Rainproof - Type 3R, Aluminum Enclosure, painted GRAY

Enclosed Industrial Control - Suitable ONLY for Use as Service Equipment

The short circuit current rating is 10,000 RMS symmetrical amperes maximum at 240 volts maximum, in accordance with the table below, but is limited to the lowest short circuit rating of any installed circuit breaker. Watthour meter is not included in the short circuit rating. Replacement circuit breakers must be of the same type and rating.

METERED CIRCUIT DIRECTORY

No.	Amp.	Poles	Circuit Description
1	100	2	MAIN
2	20	1	LIGHTING
3	30	1	SIGNAL
4	20	1	CONTROL
5			
6			
7			
8			

AIC RATING	MAIN	BRANCHES
10	SIEMENS TYPE BQ	SIEMENS TYPE BQ

Circuit breaker handle trip position is between "ON" and "OFF". To reset breaker, move handle to the full "OFF" position, then to full "ON".

NOTES:

- Clear plastic cover for utility landing.
- Hold open bar for meter hood
- Padlocking flip latches on all doors – No Zeus fasteners
- 8x8 Fixed meter viewing window
- Hinges must be "hidden" from front view
- Bolts must not be visible from the outside.
- ¼" Gasket on front door on all sides.

Terminal Information, Use AL/CU conductors

FIELD WIRED CONNECTORS				BUS CONNECTIONS				For Equipment Ground ONLY, multiple conductors in a single opening are permissible as indicated below		
Socket Size	Torque Lb.-In.	AWG Wire Size	SLOTTED HEAD SCREWS		THREADFORMING SCREWS			AWG Wire Size	Small Hole	Large Hole
			Small Hole	Large Hole	SCREW	MAT'L	Torque, Lb.-In.			
5/16"	275	#14-10	20	35	10-24	AL	30	#14-10	1-2	1-2
3/8"	375	#8	25	40	10-24	CU	50	#10	1	3
1/2"	500	#6	35	45	¼-20	AL	50	#8 - 6	1	1
9/16"	600	#4	-	45	¼-20	CU	72	#4 - 1/0	1	1
		#3-1/0	-	50						

Shipping may loosen electrical connections. CHECK TIGHTNESS BEFORE ENERGIZING.

BONDED NEUTRAL – Remove neutral load conductors for test purposes only! FIELD INSTALLED conductors shall be 60°C, 75°C, or 90°C, sized to 60°C rating for 110 amps or less; and 75°C or 90°C for 125 amps and above.



Catalog Number:

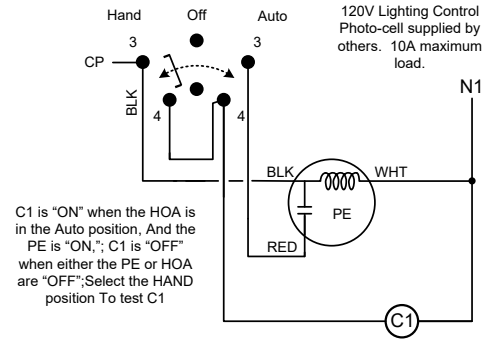
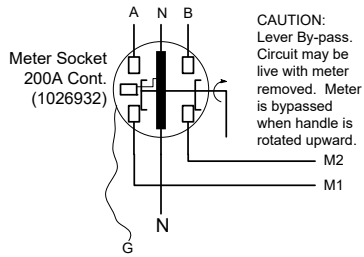
CP3A51C16AAPCSXCCOD3

120/240 VAC, 1-phase, 3-wire; 100 Amps Maximum, (see Main circuit breaker rating)

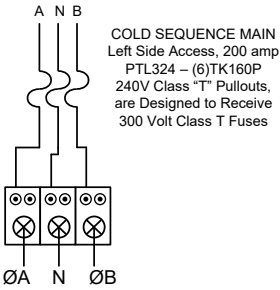
Rainproof - Type 3R, Aluminum Enclosure, painted GRAY

Enclosed Industrial Control - Suitable ONLY for Use as Service Equipment

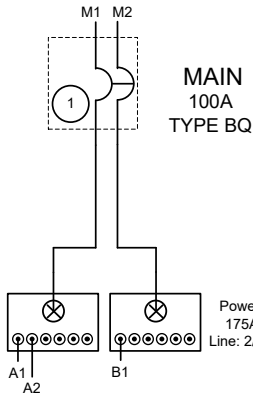
Dead Front - 1189639



C1: Contactor, 30-amp, 4-pole, Electrically held (120v coil) Square D 8903 LO40V02(1152792)

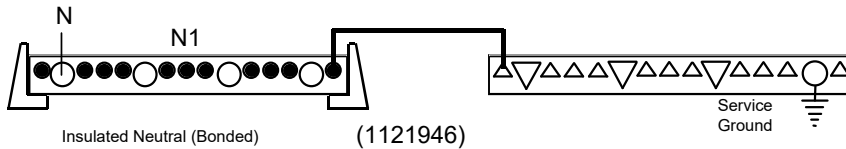
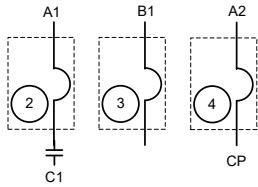


COLD SEQUENCE MAIN
Left Side Access. 200 amp
PTL324 - (6)TK160P
240V Class "T" Pullouts,
are Designed to Receive
300 Volt Class T Fuses



Power Distribution Block
175A, 600V (1008183)
Line: 2/0-#12; Load: #4-#12

Service Termination
Section, Power Block
310A, 600V, #6 - 350KCMIL
(1202927)
Finger Safe Cover CC1433
(1202928)
CAUTION label (1203500)

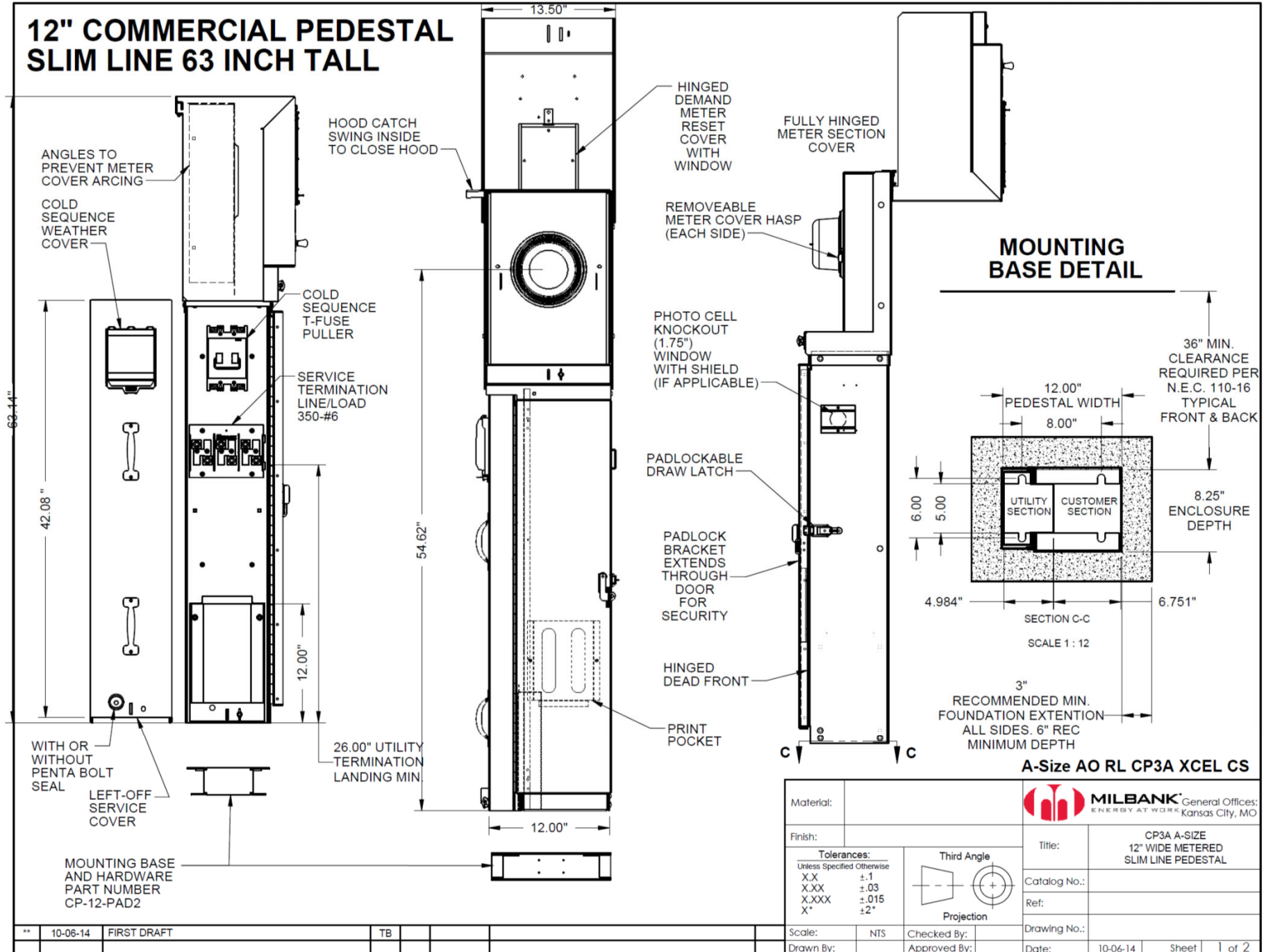


**BONDED NEUTRAL, REMOVE NEUTRAL LOAD
CONDUCTORS FOR TEST PURPOSES ONLY**



CP3A51C16AAPCSXCCOD3

A-Size AO RL CP3A XCEL CS



DRAWING APPROVAL REQUIRED

THE FOLLOWING DRAWING IS SUBMITTED FOR YOUR APPROVAL FOR INTERPRETIVE ACCURACY. BEFORE WE MAY PROCEED WITH MANUFACTURING THIS PRODUCT WE REQUEST THAT THE APPROPRIATE PERSONS REVIEW THIS DRAWING, SIGN & DATE THE DRAWING & RETURN THIS FORM AS APPROVAL OF THIS PRODUCT.

As of 4/30/19 the lead time for this unit is 4-5 weeks after receipt of this drawing with approval signature. Customer requested non-standard components can exceed 6 weeks.

Date 4/30/19
Agent DELANDSHEER SALES
Distributor DELANDSHEER SALES INC
Job COD WITH HOA AND CONTACTOR
PO#
Quote # SQ261591
Catalog # CP3A51C16AAPCSXCCOD3

Comments: _____

Drawing is approved as is

Requires changes

Drawing not approved

Company Name _____

Signature _____ Date _____

PLEASE FAX OR EMAIL APPROVAL TO YOUR LOCAL MILBANK SALES REP.